



THE MEDICAL CENTER AT CAVERNA

Community Health Needs Assessment & Strategic Implementation Plan for 2019-2021



Med Center Health

The Medical Center at Caverna

**The Medical Center at Caverna
Community Health Needs Assessment (CHNA) & Strategic
Implementation Plan**

Table of Contents

| | |
|--|-----------|
| Organizational Description | 3 |
| Service Area Description | 5 |
| Existing Licensed Healthcare Resources in BRADD Area | 6 |
| Mission, Vision & Values | 19 |
| Purpose | 20 |
| Executive Summary | 20 |
| Process | 21 |
| Community Demographics | 25 |
| Strategic Implementation Plan for Hospital | 28 |
| Partnerships with Key Community Organizations | 28 |
| Implementation Strategies | 29 |
| Identified Priority: Substance Abuse | 29 |
| Identified Priority: Chronic Disease & Management | 30 |
| Communication Plan | 31 |
| Conclusion | 31 |

ORGANIZATIONAL DESCRIPTION

The Bowling Green-Warren County Hospital Corporation (the “Corporation”) is a private non-stock, nonprofit Kentucky corporation that operates a hospital facility in Bowling Green, Kentucky under the name “The Medical Center at Bowling Green”; since 1993 a hospital and long term care and rehab facility in Scottsville, Kentucky under the name “The Medical Center at Scottsville”; and since 2016 a hospital in Horse Cave, Kentucky under the name “The Medical Center at Caverna”. The three facilities are part of one corporation but are separately licensed by the State of Kentucky. References herein to “The Medical Center” refers to the combined facilities. References herein to “The Medical Center at Bowling Green” refer to the Corporation’s facilities in Bowling Green, Kentucky. References herein to “The Medical Center at Scottsville” refer to the Corporation’s facilities in Scottsville, Kentucky. References herein to “The Medical Center at Caverna” refer to the Corporation’s facilities in Horse Cave, Kentucky.

The Corporation has been determined by the Internal Revenue Service (the “IRS”) to be a charitable organization as described in Section 501(c)(3) of the Internal Revenue Code of 1986, as amended (the “Code”) and is exempt from federal income taxation by virtue of Sections 501(a) and 501(c)(3) of the Code.

The Corporation is owned and controlled by Commonwealth Health Corporation, Inc. (“Commonwealth”), a non-stock, nonprofit Kentucky corporation, under a holding company arrangement which was established in 1984. Commonwealth has been determined by the IRS to be a charitable organization as described in Section 501(c)(3) of the Internal Revenue Code of 1986, as amended (the “Code”) and is exempt from federal income taxation by virtue of Sections 501(a) and 501(c)(3) of the Code.

In 1980, The Medical Center at Bowling Green moved into a new, six-story, state-of-the-art facility occupying 298,000 square feet on a 17-acre campus. Since 1980, because of an expanding demand for inpatient and outpatient services, several additions to The Medical Center at Bowling Green have been made, and both clinical and patient areas have been renovated and modernized.

The Medical Center at Bowling Green has undergone a series of expansions and has grown to be the largest and most comprehensive hospital facility in Southcentral Kentucky, offering a wide range of acute care and specialty services.

The Medical Center at Caverna

The Medical Center at Caverna offers residents of Hart County and the surrounding area convenient access to experienced doctors, quality healthcare services and health information.

On January 1, 2016, the Corporation purchased the assets and liabilities of Caverna Memorial Hospital (which opened its doors in June, 1967) and has operated the facility as a separately licensed hospital under the name “The Medical Center at Caverna” (Hospital). The hospital provides community members with high quality inpatient and outpatient services including a 24 hour full service emergency room.

The hospital also provides laboratory, x-ray, CT Scanning, ultrasound, digital mammography, mobile MRI, respiratory therapy and rehabilitation services. The facility is licensed as a 25-bed Critical Access Hospital and has two provider-based Rural Health Clinics: one in Horse Cave, KY and one in Munfordville, KY. The hospital currently employs a board certified internist, a board certified Family Medicine practitioner and two APRNs for the two Rural Health Clinics. It utilizes several specialists through its Specialty Clinic.

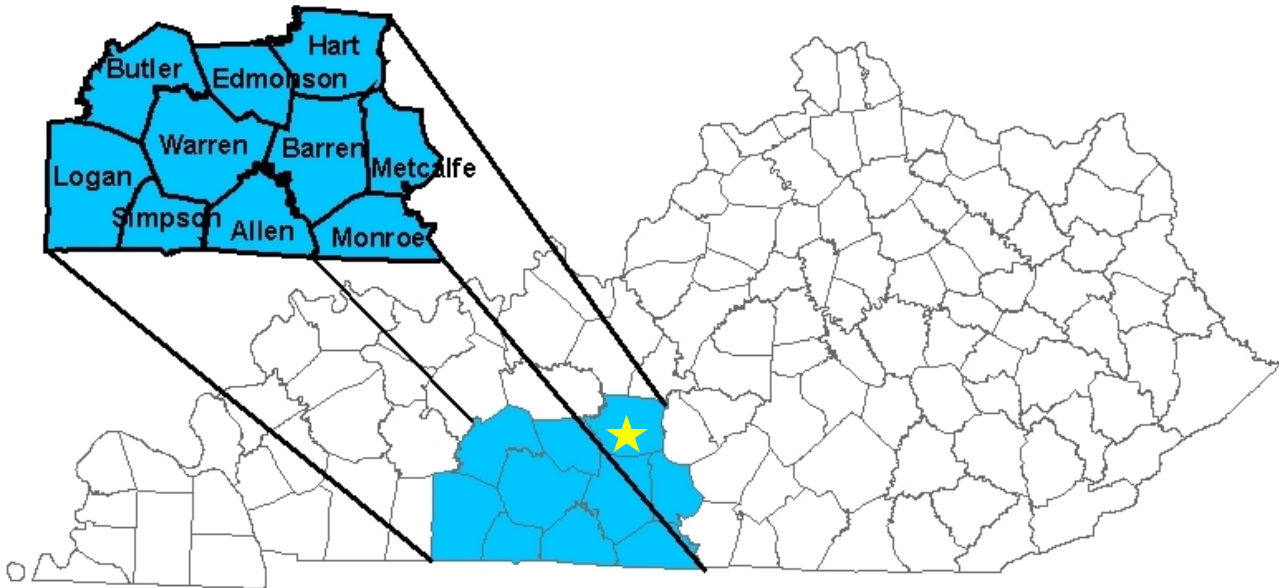
Endoscopies and minor surgeries are available at the facility as scheduled procedures. Chemotherapy services have been available since late 2018. Recent services staffed at the specialty clinic include cardiology, pulmonology, general surgery, oncology, hematology, OB/GYN and orthopedics. The hospital also operates an outpatient geriatric mental health service program under the name “Senior Perspectives Caverna”.

Service Area Description

The primary service area for The Medical Center at Caverna is Hart County, which has an approximate population of 18,757 according to the latest U.S. Census Department estimates. Bowling Green, Kentucky, the county seat of Warren County, is where the Corporation's major facilities are located. The latest Census data indicates Warren County's population is approximately 128,845.

The Medical Center at Caverna CHNA Service Area

 The Medical Center at Caverna



Existing Licensed Healthcare Resources in BRADD Area

*** Kentucky Cabinet for Health and Family Services. BRADD Licensed Health Care Facilities [Table]. *OIG Directories*. Retrieved from URL <https://chfs.ky.gov/agencies/os/oig/dhc/Pages/hct.aspx>

| County | Facility Name | City | Certified Beds | Type |
|----------|---|---------------|----------------|----------------|
| ALLEN | CAL TURNER REHAB AND SPECIALTY CARE | SCOTTSVILLE | 110 | LONG TERM CARE |
| BARREN | SIGNATURE HEALTHCARE OF GLASGOW REHAB & WELLNESS CENTER | GLASGOW | 68 | LONG TERM CARE |
| BARREN | GLASGOW STATE NURSING FACILITY | GLASGOW | 100 | LONG TERM CARE |
| BARREN | GLENVIEW HEALTH CARE FACILITY | GLASGOW | 60 | LONG TERM CARE |
| BARREN | NHC HEALTHCARE GLASGOW | GLASGOW | 194 | LONG TERM CARE |
| BARREN | T J SAMSON COMMUNITY HOSPITAL | GLASGOW | 16 | LONG TERM CARE |
| EDMONSON | EDMONSON CENTER | BROWNSVILLE | 74 | LONG TERM CARE |
| HART | SIGNATURE HEALTHCARE OF HART COUNTY REHAB & WELLNESS CENTER | HORSE CAVE | 104 | LONG TERM CARE |
| LOGAN | AUBURN HEALTH CARE | AUBURN | 66 | LONG TERM CARE |
| LOGAN | CREEKWOOD PLACE NURSING & REHAB CENTER, INC | RUSSELLVILLE | 104 | LONG TERM CARE |
| METCALFE | METCALFE HEALTH CARE CENTER | EDMONTON | 71 | LONG TERM CARE |
| MONROE | SIGNATURE HEALTHCARE OF MONROE COUNTY REHAB AND WELLNESS CENTER | TOMPKINSVILLE | 104 | LONG TERM CARE |
| SIMPSON | FRANKLIN-SIMPSON NURSING AND REHABILITATION CENTER | FRANKLIN | 98 | LONG TERM CARE |

| | | | | |
|---------|---|---------------|-----|--------------------------|
| WARREN | BOWLING GREEN NURSING AND REHABILITATION CENTER | BOWLING GREEN | 66 | LONG TERM CARE |
| WARREN | CHRISTIAN HEALTH CENTER | BOWLING GREEN | 39 | LONG TERM CARE |
| WARREN | COLONIAL CENTER | BOWLING GREEN | 48 | LONG TERM CARE |
| WARREN | GREENWOOD NURSING & REHABILITATION CENTER | BOWLING GREEN | 128 | LONG TERM CARE |
| WARREN | HOPKINS CENTER | WOODBURN | 50 | LONG TERM CARE |
| WARREN | MAGNOLIA VILLAGE | BOWLING GREEN | 60 | LONG TERM CARE |
| WARREN | SIGNATURE HEALTHCARE OF BOWLING GREEN | BOWLING GREEN | 176 | LONG TERM CARE |
| BARREN | BARREN COUNTY NURSING AND REHABILITATION | GLASGOW | 94 | LONG TERM CARE |
| BUTLER | MORGANTOWN CARE AND REHABILITATION CENTER | BUTLER | 122 | LONG TERM CARE |
| ALLEN | THE MEDICAL CENTER AT SCOTTSVILLE | SCOTTSVILLE | 25 | CRITICAL ACCESS HOSPITAL |
| BARREN | TJ SAMSON COMMUNITY HOSPITAL | GLASGOW | 180 | ACUTE |
| HART | THE MEDICAL CENTER AT CAVERNA | HORSE CAVE | 25 | CRITICAL ACCESS HOSPITAL |
| LOGAN | LOGAN MEMORIAL HOSPITAL | RUSSELLVILLE | 75 | ACUTE |
| MONROE | MONROE COUNTY MEDICAL CENTER | TOMPKINSVILLE | 49 | ACUTE |
| SIMPSON | THE MEDICAL CENTER AT FRANKLIN | FRANKLIN | 25 | CRITICAL ACCESS HOSPITAL |
| WARREN | TRISTAR GREENVIEW REGIONAL HOSPITAL | BOWLING GREEN | 211 | ACUTE |

| | | | | |
|----------|---|---------------|-----|--------------------------------|
| WARREN | RIVENDELL BEHAVIORAL HEALTH SERVICES | BOWLING GREEN | 125 | PSYCHIATRIC |
| WARREN | SOUTHERN KY REHAB HOSPITAL | BOWLING GREEN | 60 | REHAB |
| WARREN | THE MEDICAL CENTER AT BOWLING GREEN | BOWLING GREEN | 337 | ACUTE |
| WARREN | MEDICAL CENTER URGENTCARE | BOWLING GREEN | 0 | AMBULATORY CARE CLINIC |
| BARREN | T J SAMSON AMBULATORY CARE CENTER | GLASGOW | 0 | AMULATORY CARE CLINIC |
| BARREN | MCPEAK SURGERY CENTER | GLASGOW | 0 | AMBULATORY SURGICAL CENTER |
| WARREN | LIFESKILLS | BOWLING GREEN | 0 | COMMUNITY MENTAL HEALTH CENTER |
| LOGAN | ACTIVE DAY OF RUSSELLVILLE | RUSSELLVILLE | 0 | ADULT DAY HEALTH |
| WARREN | BARREN RIVER ADULT DAY CARE CENTER | BOWLING GREEN | 0 | ADULT DAY HEALTH |
| METCALFE | SHUFFETT'S ADULT DAY CARE, INC | EDMONTON | 0 | ADULT DAY HEALTH |
| METCALFE | GOLDEN YEARS ADULT DAY HEALTH CENTER | EDMONTON | 0 | ADULT DAY HEALTH |
| HART | THE OLE HOMEPLACE ADULT DAY HEALTH CARE CENTER-HART | MUNFORDVILLE | 0 | ADULT DAY HEALTH |
| WARREN | ACTIVE DAY OF BOWLING GREEN | BOWLING GREEN | 0 | ADULT DAY HEALTH |
| MONROE | MONROE COUNTY MEDICAL CENTER | TOMPKINSVILLE | 0 | ADULT DAY HEALTH |
| EDMONSON | ACTIVE DAY OF BROWNSVILLE | BROWNSVILLE | 0 | ADULT DAY HEALTH |
| BARREN | JUST FAMILY, INC | GLASGOW | 0 | ADULT DAY HEALTH |

| | | | | |
|---------|--|---------------|---|---|
| WARREN | FRESENIUS MEDICAL CARE BOWLING GREEN WARREN COUNTY | BOWLING GREEN | 0 | END STAGE RENAL DIALYSIS |
| WARREN | BOWLING GREEN HOME THERAPIES | BOWLING GREEN | 0 | END STAGE RENAL DIALYSIS |
| WARREN | DIALYSIS OF WARREN COUNTY | BOWLING GREEN | 0 | END STAGE RENAL DIALYSIS |
| BARREN | T J SAMSON KIDNEY CARE | GLASGOW | 0 | END STAGE RENAL DIALYSIS |
| WARREN | LOST RIVER DIALYSIS | BOWLING GREEN | 0 | END STAGE RENAL DIALYSIS |
| SIMPSON | FRESENIUS KIDNEY CARE RED OAK | FRANKLIN | 0 | END STAGE RENAL DIALYSIS |
| BARREN | FRESENIUS MEDICAL CARE GLASGOW | GLASGOW | 0 | END STAGE RENAL DIALYSIS |
| WARREN | RAINBOW, LLC | BOWLING GREEN | 0 | HOME HEALTH AGENCY |
| MONROE | LIFELINE HOME HEALTH | TOMPKINSVILLE | 0 | HOME HEALTH AGENCY |
| BARREN | T. J. SAMSON COMM HOSP HOME CARE PROGRAM | GLASGOW | 0 | HOME HEALTH AGENCY |
| WARREN | THE MEDICAL CENTER HOME CARE PROGRAM | BOWLING GREEN | 0 | HOME HEALTH AGENCY |
| WARREN | LIFELINE HEALTH CARE OF WARREN | BOWLING GREEN | 0 | HOME HEALTH AGENCY |
| LOGAN | LIFELINE HEALTH CARE OF LOGAN | RUSSELLVILLE | 0 | HOME HEALTH AGENCY |
| BARREN | T J SAMSON COMMUNITY HOSPITAL HOME CARE HOSPICE | GLASGOW | 0 | HOSPICE |
| WARREN | HOSPICE OF SOUTHERN KENTUCKY | BOWLING GREEN | 0 | HOSPICE |
| LOGAN | LIFESKILLS RESIDENTIAL DEVELOPMENT | RUSSELLVILLE | 0 | MENTALLY RETARDED/DEVELOPMENTALLY DISABLED GROUP HOME |

| | | | | |
|----------|--|---------------|---|---|
| WARREN | FAIRVIEW COMMUNITY HEALTH CENTER | BOWLING GREEN | 0 | PRIMARY CARE CENTER |
| BARREN | SPECTRUM CARE ACADEMY OF GLASGOW II | CAVE CITY | 0 | PRTF |
| BARREN | SPECTRUM CARE ACADEMY OF GLASGOW I | CAVE CITY | 0 | PRTF |
| WARREN | GGC WALK-IN CLINICS | BOWLING GREEN | 0 | SPECIALIZED HEALTH CLINIC |
| WARREN | COMMUNITY CLINIC | BOWLING GREEN | 0 | SPECIALIZED HEALTH CLINIC |
| BARREN | THE BARREN RIVER REGIONAL CANCER CENTER, INC | GLASGOW | 0 | SPECIALIZED MEDICAL TECHNOLOGY SERVICES |
| WARREN | WESTERN KENTUCKY DIAGNOSTIC IMAGING | BOWLING GREEN | 0 | SPECIALIZED MEDICAL TECHNOLOGY SERVICES |
| HART | CAVERNA PRIMARY CARE CLINIC | HORSE CAVE | 0 | PHYSICIAN OFFICE/LAB |
| BUTLER | ALL EASE CHIROPRACTIC, LLC | MORGANTOWN | 0 | PHYSICIAN OFFICE/LAB |
| WARREN | A NEW START | BOWLING GREEN | 0 | PHYSICIAN OFFICE/LAB |
| WARREN | ANSON HSIEH, MD | BOWLING GREEN | 0 | PHYSICIAN OFFICE/LAB |
| EDMONSON | A PLUS FAMILY HEALTHCARE | BROWNSVILLE | 0 | PHYSICIAN OFFICE/LAB |
| WARREN | BLUEGRASS MEDICAL CARE | BOWLING GREEN | 0 | PHYSICIAN OFFICE/LAB |
| WARREN | ASSOCIATE IN PHYSICIAN SERVICES | BOWLING GREEN | 0 | PHYSICIAN OFFICE/LAB |
| ALLEN | ASSOCIATES IN PHYSICIAN SERVICES | SCOTTSVILLE | 0 | PHYSICIAN OFFICE/LAB |
| ALLEN | BLOINK CHIROPRACTIC | SCOTTSVILLE | 0 | PHYSICIAN OFFICE/LAB |
| WARREN | BLUEGRASS HEALTH CLINIC | BOWLING GREEN | 0 | PHYSICIAN OFFICE/LAB |
| WARREN | BOWLING GREEN DERMATOLOGY & SKIN CANCER SPECIALIST | BOWLING GREEN | 0 | PHYSICIAN OFFICE/LAB |

| | | | | |
|---------|--|---------------|---|----------------------|
| WARREN | BOWLING GREEN INTERNAL MEDICINE | BOWLING GREEN | 0 | PHYSICIAN OFFICE/LAB |
| WARREN | BOWLING GREEN VA OUTPATIENT CLINIC | BOWLING GREEN | 0 | PHYSICIAN OFFICE/LAB |
| WARREN | BREIWA, WARE & JESKIE | BOWLING GREEN | 0 | PHYSICIAN OFFICE/LAB |
| WARREN | BRIAN K MACY MD | BOWLING GREEN | 0 | PHYSICIAN OFFICE/LAB |
| BUTLER | BUTLER COUNTY FAMILY CARE | MORGANTOWN | 0 | PHYSICIAN OFFICE/LAB |
| BARREN | CARDIOLOGY ASSOCIATES OF SOUTHERN KY | GLASGOW | 0 | PHYSICIAN OFFICE/LAB |
| WARREN | CAREHERE HEALTH CENTER | BOWLING GREEN | 0 | PHYSICIAN OFFICE/LAB |
| HART | CAVERNA PRIMARY CARE CLINIC | HORSE CAVE | 0 | PHYSICIAN OFFICE/LAB |
| ALLEN | COMMONWEALTH HEALTH CORPORATION | SCOTTSVILLE | 0 | PHYSICIAN OFFICE/LAB |
| WARREN | COMPREHENSIVE PAIN SPECIALISTS | BOWLING GREEN | 0 | PHYSICIAN OFFICE/LAB |
| SIMPSON | COMPTON & COMPTON EYE CARE, PLLC | FRANKLIN | 0 | PHYSICIAN OFFICE/LAB |
| WARREN | DAVID C NAPIER MD | BOWLING GREEN | 0 | PHYSICIAN OFFICE/LAB |
| LOGAN | DR CHARLES MATHIS OFFICE | RUSSELLVILLE | 0 | PHYSICIAN OFFICE/LAB |
| SIMPSON | DR SANDA CRNKIC DBA SPINECARE CHIROPRACTIC | FRANKLIN | 0 | PHYSICIAN OFFICE/LAB |
| BARREN | EAST SIDE FAMILY MEDICAL | GLASGOW | 0 | PHYSICIAN OFFICE/LAB |
| WARREN | ENT BOWLING GREEN | BOWLING GREEN | 0 | PHYSICIAN OFFICE/LAB |
| SIMPSON | ENT BOWLING GREEN FRANKLIN | FRANKLIN | 0 | PHYSICIAN OFFICE/LAB |
| BARREN | FAMILY PRACTICE CENTER | GLASGOW | 0 | PHYSICIAN OFFICE/LAB |

| | | | | |
|----------|---|---------------|---|----------------------|
| SIMPSON | FAST PACE KENTUCKY | FRANKLIN | 0 | PHYSICIAN OFFICE/LAB |
| LOGAN | FAST PACE KENTUCKY | RUSSELLVILLE | 0 | PHYSICIAN OFFICE/LAB |
| MONROE | GAMALIEL CLINIC | GAMALIEL | 0 | PHYSICIAN OFFICE/LAB |
| HART | GGC-MUNFORDVILLE – PANDEYA | MUNFORDVILLE | 0 | PHYSICIAN OFFICE/LAB |
| BUTLER | GHAYTH M HAMMAD, MD, PSC | MORGANTOWN | 0 | PHYSICIAN OFFICE/LAB |
| BARREN | GLASGOW PEDIATRICS HEALTHCARE | GLASGOW | 0 | PHYSICIAN OFFICE/LAB |
| BARREN | GLASGOW URGENT CLINIC INC | GLASGOW | 0 | PHYSICIAN OFFICE/LAB |
| BARREN | GLASGOW TREATMENT CENTER | BARREN | 0 | PHYSICIAN OFFICE/LAB |
| WARREN | THE GLASSER CLINIC | BOWLING GREEN | 0 | PHYSICIAN OFFICE/LAB |
| EDMONSON | GLK ENTERPRISES, LLC DBA WILKES CLINIC | BROWNSVILLE | 0 | PHYSICIAN OFFICE/LAB |
| WARREN | GRAVES GILBERT CLINIC - PEDIATRIC ASSOCIATES | BOWLING GREEN | 0 | PHYSICIAN OFFICE/LAB |
| WARREN | GRAVES GILBERT CLINIC - PRIME CARE | BOWLING GREEN | 0 | PHYSICIAN OFFICE/LAB |
| WARREN | GRAVES GILBERT CLINIC - WKU | BOWLING GREEN | 0 | PHYSICIAN OFFICE/LAB |
| SIMPSON | GRAVES GILBERT CLINIC- ADAMS | FRANKLIN | 0 | PHYSICIAN OFFICE/LAB |
| BARREN | GRAVES GILBERT CLINIC CAVE CITY WILLIAMS | CAVE CITY | 0 | PHYSICIAN OFFICE/LAB |
| WARREN | GRAVES GILBERT CLINIC FAMILY CARE CENTER | BOWLING GREEN | 0 | PHYSICIAN OFFICE/LAB |
| SIMPSON | GRAVES GILBERT CLINIC FRANKLIN RED OAK | FRANKLIN | 0 | PHYSICIAN OFFICE/LAB |
| WARREN | GRAVES GILBERT CLINIC FCC – LINDSEY WHITEMAN | BOWLING GREEN | 0 | PHYSICIAN OFFICE/LAB |

| | | | | |
|---------|--|---------------|---|----------------------|
| WARREN | GRAVES GILBERT CLINIC GRANESE | BOWLING GREEN | 0 | PHYSICIAN OFFICE/LAB |
| BARREN | GRAVES GILBERT CLINIC GLASGOW | GLASGOW | 0 | PHYSICIAN OFFICE/LAB |
| WARREN | GRAVES GILBERT CLINIC HSIEH | BOWLING GREEN | 0 | PHYSICIAN OFFICE/LAB |
| WARREN | GRAVES GILBERT CLINIC HARTLAND | BOWLING GREEN | 0 | PHYSICIAN OFFICE/LAB |
| BUTLER | GRAVES GILBERT CLINIC MORGANTOWN | MORGANTOWN | 0 | PHYSICIAN OFFICE/LAB |
| WARREN | GRAVES GILBERT CLINIC MAB | BOWLING GREEN | 0 | PHYSICIAN OFFICE/LAB |
| LOGAN | GRAVES GILBERT CLINIC LEWISBURG | LOGAN | 0 | PHYSICIAN OFFICE/LAB |
| LOGAN | GRAVES GILBERT CLINIC PSC | RUSSELLVILLE | 0 | PHYSICIAN OFFICE/LAB |
| BARREN | GRAVES GILBERT CLINIC SOUTH | GLASGOW | 0 | PHYSICIAN OFFICE/LAB |
| WARREN | GRAVES GILBERT CLINIC UROLOGY GROUP | BOWLING GREEN | 0 | PHYSICIAN OFFICE/LAB |
| WARREN | GRAVES GILBERT CLINIC WALK-IN-CARE | BOWLING GREEN | 0 | PHYSICIAN OFFICE/LAB |
| WARREN | GRAVES GILBERT CLINIC YURCHISIN | BOWLING GREEN | 0 | PHYSICIAN OFFICE/LAB |
| WARREN | GREENVIEW MEDICAL GROUP BOWLING GREEN | BOWLING GREEN | 0 | PHYSICIAN OFFICE/LAB |
| WARREN | GREENVIEW MEDICAL GROUP THE ALLEN CLINIC | BOWLING GREEN | 0 | PHYSICIAN OFFICE/LAB |
| WARREN | GREENWOOD URGENT CLINIC | BOWLING GREEN | 0 | PHYSICIAN OFFICE/LAB |
| WARREN | HEALTHFIRST FAMILY MEDICAL CLINIC | BOWLING GREEN | 0 | PHYSICIAN OFFICE/LAB |
| WARREN | INDAR M JHAMB MD | BOWLING GREEN | 0 | PHYSICIAN OFFICE/LAB |
| SIMPSON | INTERVENTIONAL PAIN SPECIALISTS | FRANKLIN | 0 | PHYSICIAN OFFICE/LAB |
| ALLEN | INTERVENTIONAL PAIN SPECIALISTS | SCOTTSVILLE | 0 | PHYSICIAN OFFICE/LAB |
| BARREN | INTERVENTIONAL PAIN SPECIALISTS | GLASGOW | 0 | PHYSICIAN OFFICE/LAB |

| | | | | |
|---------|--|---------------|---|----------------------|
| WARREN | INTERVENTIONAL PAIN SPECIALISTS OF BOWLING GREEN | BOWLING GREEN | 0 | PHYSICIAN OFFICE/LAB |
| BARREN | JACKSON HEALTH AND WELLNESS CLINIC | GLASGOW | 0 | PHYSICIAN OFFICE/LAB |
| BARREN | JAMES P CREWS MD | CAVE CITY | 0 | PHYSICIAN OFFICE/LAB |
| WARREN | JEFFREY PURVIS MD | BOWLING GREEN | 0 | PHYSICIAN OFFICE/LAB |
| WARREN | KENTUCKY SKIN CANCER CENTER | BOWLING GREEN | 0 | PHYSICIAN OFFICE/LAB |
| WARREN | K G SAHETYA MD PSC | BOWLING GREEN | 0 | PHYSICIAN OFFICE/LAB |
| LOGAN | LAWRENCE JOSEPH GOTTS, DO | RUSSELLVILLE | 0 | PHYSICIAN OFFICE/LAB |
| LOGAN | LOGAN PHYSICIANS PRACTICE LLC | RUSSELLVILLE | 0 | PHYSICIAN OFFICE/LAB |
| LOGAN | LOGAN PRIMARY CARE AUBURN | AUBURN | 0 | PHYSICIAN OFFICE/LAB |
| LOGAN | LOGAN SPECIALTY CLINIC | RUSSELLVILLE | 0 | PHYSICIAN OFFICE/LAB |
| BARREN | MEDICAL ASSOC OF SOUTHERN KENTUCKY | GLASGOW | 0 | PHYSICIAN OFFICE/LAB |
| WARREN | MED CENTER HEALTH NEUROLOGY | BOWLING GREEN | 0 | PHYSICIAN OFFICE/LAB |
| WARREN | MED CENTER PRIMARY CARE | BOWLING GREEN | 0 | PHYSICIAN OFFICE/LAB |
| SIMPSON | MEDICAL CENTER PRIMARY CARE FRANKLIN | SIMPSON | 0 | PHYSICIAN OFFICE/LAB |
| WARREN | MEDICAL CENTER URGENTCARE | BOWLING GREEN | 0 | PHYSICIAN OFFICE/LAB |
| ALLEN | THE MEDICAL CTR SCOTTSVILLE PRIMARY CARE CLINIC | SCOTTSVILLE | 0 | PHYSICIAN OFFICE/LAB |
| MONROE | MONROE CO MEDICAL CENTER MEDICAL PRACTICE | TOMPKINSVILLE | 0 | PHYSICIAN OFFICE/LAB |
| MONROE | MONROE FAMILY MEDICAL CENTER | TOMPKINSVILLE | 0 | PHYSICIAN OFFICE/LAB |

| | | | | |
|---------|---|---------------|---|----------------------|
| WARREN | MORT SHAHMIR MD | BOWLING GREEN | 0 | PHYSICIAN OFFICE/LAB |
| HART | MUNFORDVILLE PRIMARY CARE CLINIC | MUNFORDVILLE | 0 | PHYSICIAN OFFICE/LAB |
| HART | NEPHROLOGY ASSOCIATES OF KENTUCKIANA | MUNFORDVILLE | 0 | PHYSICIAN OFFICE/LAB |
| WARREN | NORTON CHILDREN'S MATERNAL FETAL MEDICINE | WARREN | 0 | PHYSICIAN OFFICE/LAB |
| LOGAN | P K HAYDEN LOGAN FAMILY PRACTICE | RUSSELLVILLE | 0 | PHYSICIAN OFFICE/LAB |
| BARREN | PENDLETON FAMILY CARE | GLASGOW | 0 | PHYSICIAN OFFICE/LAB |
| LOGAN | RONALD B ELDER MD PSC | RUSSELLVILLE | 0 | PHYSICIAN OFFICE/LAB |
| WARREN | SAM KESRI MD | BOWLING GREEN | 0 | PHYSICIAN OFFICE/LAB |
| SIMPSON | SAM PERSAD MD | FRANKLIN | 0 | PHYSICIAN OFFICE/LAB |
| WARREN | SCOTT C SIMS MD | BOWLING GREEN | 0 | PHYSICIAN OFFICE/LAB |
| ALLEN | SCOTTSVILLE URGENT CLINIC | SCOTTSVILLE | 0 | PHYSICIAN OFFICE/LAB |
| WARREN | SPERO HEALTH | BOWLING GREEN | 0 | PHYSICIAN OFFICE/LAB |
| BUTLER | ST CAMILLUS URGENTCARE MORGANTOWN | MORGANTOWN | 0 | PHYSICIAN OFFICE/LAB |
| WARREN | THE SUNSHINE HEALTHCARE CENTER | BOWLING GREEN | 0 | PHYSICIAN OFFICE/LAB |
| BARREN | T J SAMSON OUTPATIENT SERVICES UROLOGY & GI | GLASGOW | 0 | PHYSICIAN OFFICE/LAB |
| BARREN | T J HEALTH PARTNERS THE WALMART CLINIC | GLASGOW | 0 | PHYSICIAN OFFICE/LAB |
| BARREN | T J HEALTH PAVILION LABORATORY | GLASGOW | 0 | PHYSICIAN OFFICE/LAB |
| WARREN | TAPP MEDICAL CLINIC | BOWLING GREEN | 0 | PHYSICIAN OFFICE/LAB |

| | | | | |
|--------|--|---------------|---|------------------------------------|
| WARREN | TIM LONG MD PSC | BOWLING GREEN | 0 | PHYSICIAN OFFICE/LAB |
| WARREN | THE PRIVATE PRACTICE | BOWLING GREEN | 0 | PHYSICIAN OFFICE/LAB |
| MONROE | TOMPKINSVILLE PRIMARY CARE ASSOCIATES | TOMPKINSVILLE | 0 | PHYSICIAN OFFICE/LAB |
| BARREN | TONY L HOGAN APRN HEALTH CLINIC | GLASGOW | 0 | PHYSICIAN OFFICE/LAB |
| WARREN | VERDANT HEALTHCARE | BOWLING GREEN | 0 | PHYSICIAN OFFICE/LAB |
| BARREN | WAGNER EYE CARE CENTER | GLASGOW | 0 | PHYSICIAN OFFICE/LAB |
| WARREN | WESTERN KY HEART & LUNG ASSOCIATES | BOWLING GREEN | 0 | PHYSICIAN OFFICE/LAB |
| WARREN | WILLIAM HARRIGAN MD | BOWLING GREEN | 0 | PHYSICIAN OFFICE/LAB |
| WARREN | WOMEN'S HEALTH SPECIALISTS | BOWLING GREEN | 0 | PHYSICIAN OFFICE/LAB |
| WARREN | ZIA NEUROLOGY ASSOCIATES | BOWLING GREEN | 0 | PHYSICIAN OFFICE/LAB |
| WARREN | ACCULAB | BOWLING GREEN | 0 | LAB |
| WARREN | BOWLING GREEN ASSOCIATED PATHOLOGISTS, PSC | BOWLING GREEN | 0 | LAB |
| HART | FAMILY MEDICAL CENTER OF HART COUNTY | MUNFORDVILLE | 0 | LAB |
| WARREN | GILBERT BARBEE MOORE & MCILVOY, PSC | BOWLING GREEN | 0 | LAB |
| WARREN | GRANESE PATHOLOGY LABORATORY | BOWLING GREEN | 0 | LAB |
| BARREN | PATHGROUP (TJ SAMSON) | GLASGOW | 0 | LAB |
| WARREN | THE KIDZ CLUB | BOWLING GREEN | 0 | PRESCRIBED PEDIATRIC EXTENDED CARE |
| WARREN | PREVENTION LIFESKILLS, INC | BOWLING GREEN | 0 | ALCOHOL DRUG PREVENTION |
| LOGAN | ADVANCED BEHAVIORAL CONSULTANTS | RUSSELLVILLE | 0 | ALCOHOL AND OTHER DRUG ENTITY |

| | | | | |
|---------|--|---------------|---|-------------------------------|
| BARREN | ALLIANCE COUNSELING ASSOCIATES | GLASGOW | 0 | ALCOHOL AND OTHER DRUG ENTITY |
| BUTLER | ANDREA'S MISSION | MORGANTOWN | 0 | ALCOHOL AND OTHER DRUG ENTITY |
| BUTLER | ANDREA'S MISSION FOR MEN | MORGANTOWN | 0 | ALCOHOL AND OTHER DRUG ENTITY |
| WARREN | ASAP AT WILSON PLACE | BOWLING GREEN | 0 | ALCOHOL AND OTHER DRUG ENTITY |
| HART | BLUEGRASS PROFESSIONAL COUNSELING | MUNFORDVILLE | 0 | ALCOHOL AND OTHER DRUG ENTITY |
| WARREN | CENTER FOR BEHAVIORAL HEALTH KENTUCKY, INC | BOWLING GREEN | 0 | ALCOHOL AND OTHER DRUG ENTITY |
| WARREN | COMMUNITY RESOURCE CENTER INC | BOWLING GREEN | 0 | ALCOHOL AND OTHER DRUG ENTITY |
| WARREN | COMPASS COUNSELING | BOWLING GREEN | 0 | ALCOHOL AND OTHER DRUG ENTITY |
| WARREN | EDUCATIONAL COUNSELING OF AMERICA | BOWLING GREEN | 0 | ALCOHOL AND OTHER DRUG ENTITY |
| BARREN | FAMILY OPTIONS, INC | GLASGOW | 0 | ALCOHOL AND OTHER DRUG ENTITY |
| WARREN | HAVEN4CHANGE, INC | BOWLING GREEN | 0 | AODE-RESIDENTIAL FACILITY |
| WARREN | HILLTOP COUNSELING SERVICES | BOWLING GREEN | 0 | ALCOHOL AND OTHER DRUG ENTITY |
| WARREN | INTERVENTION COUNSELING | BOWLING GREEN | 0 | ALCOHOL AND OTHER DRUG ENTITY |
| WARREN | JOURNEYPURE BOWLING GREEN | BOWLING GREEN | 0 | ALCOHOL AND OTHER DRUG ENTITY |
| WARREN | LIFESKILLS, INC | BOWLING GREEN | 0 | ALCOHOL AND OTHER DRUG ENTITY |
| ALLEN | MORE TO LIFE COUNSELING, LLC | SCOTTSVILLE | 0 | ALCOHOL AND OTHER DRUG ENTITY |
| ALLEN | PARK PLACE RECOVERY CENTER FOR WOMEN | SCOTTSVILLE | 0 | ALCOHOL AND OTHER DRUG ENTITY |
| WARREN | PARK PLACE RECOVERY CENTER FOR MEN | BOWLING GREEN | 0 | ALCOHOL AND OTHER DRUG ENTITY |
| SIMPSON | PEACEFUL SOLUTIONS COUNSELING SERVICES | FRANKLIN | 0 | ALCOHOL AND OTHER DRUG ENTITY |
| WARREN | SOKY COUNSELING | BOWLING GREEN | 0 | ALCOHOL AND OTHER DRUG ENTITY |

| | | | | |
|----------|--|---------------|-----|---|
| ALLEN | TIME OUT COMMUNITY COUNSELING & CORRECTIONAL SERVICE | SCOTTSVILLE | 0 | ALCOHOL AND OTHER DRUG ENTITY |
| WARREN | HOPEBRIDGE | BOWLING GREEN | 0 | BEHAVIORAL HEALTH SERVICES ORGANIZATION |
| WARREN | JOURNEYPURE BOWLING GREEN | BOWLING GREEN | 0 | BEHAVIORAL HEALTH SERVICES ORGANIZATION |
| LOGAN | MILLER FAMILY CARE HOME | AUBURN | 3 | FAMILY CARE HOMES |
| ALLEN | CORNERSTONE MANOR, LLC | SCOTTSVILLE | 36 | FREE STANDING PERSONAL CARE HOME |
| ALLEN | SCOTTSVILLE MANOR | SCOTTSVILLE | 40 | FREE STANDING PERSONAL CARE HOME |
| HART | HART COUNTY MANOR | MUNFORDVILLE | 54 | FREE STANDING PERSONAL CARE HOME |
| METCALFE | HARPER'S HOME FOR THE AGED | EDMONTON | 27 | FREE STANDING PERSONAL CARE HOME |
| SIMPSON | LEWIS MEMORIAL METHODIST HOME | FRANKLIN | 23 | FREE STANDING PERSONAL CARE HOME |
| WARREN | FERN TERRACE OF BOWLING GREEN, LLC | BOWLING GREEN | 114 | FREE STANDING PERSONAL CARE HOME |
| WARREN | THE HAVEN AT MASSEY SPRINGS | BOWLING GREEN | 18 | FREE STANDING PERSONAL CARE HOME |
| WARREN | COMFORT KEEPERS | BOWLING GREEN | 0 | CERTIFIED PERSONAL SERVICE AGENCY |
| ALLEN | COMPANION CARE SERVICES, LLC | SCOTTSVILLE | 0 | CERTIFIED PERSONAL SERVICE AGENCY |
| WARREN | HELP AT HOME, INC | BOWLING GREEN | 0 | CERTIFIED PERSONAL SERVICE AGENCY |
| WARREN | HOME INSTEAD SENIOR CARE | BOWLING GREEN | 0 | CERTIFIED PERSONAL SERVICE AGENCY |
| WARREN | RAINBOW, LLC | BOWLING GREEN | 0 | CERTIFIED PERSONAL SERVICE AGENCY |
| WARREN | TIMESAVERS KY, LLC | BOWLING GREEN | 0 | CERTIFIED PERSONAL SERVICE AGENCY |

Mission, Vision, and Values

Mission

The Medical Center at Caverna's mission is to care for people and improve the quality of life in the communities we serve.

Vision

The Medical Center at Caverna will be an innovative leader in healthcare delivery and outcomes.

What We Value

Quality

We are committed to providing the highest level of care and service at every opportunity.

People

People are our most valuable resource. We work together to achieve our organization's goals. We treat everyone with honor, dignity and respect.

Accountability

Each of us is responsible for managing our resources ethically and wisely.

Purpose

The Community Health Needs Assessment has been completed for the following reasons:

- To help meet the Hospital's mission to care for people and improve the quality of life in the communities we serve;
- To comply with the Patient Protection and Affordable Care Act of 2010 and maintain the Hospital's tax exempt status;
- To establish community health needs for the Hospital's service area, to determine areas of greatest need, and to develop a strategic plan to address those needs;
- To involve internal and external resources to ensure needs of individuals are met and that efforts are not duplicated; and
- To create a sustainable process for conducting a community health needs assessment that can be continued for future assessments.

Executive Summary

The Patient Protection and Affordable Care Act of 2010 includes a provision that requires every tax exempt, non-governmental hospital to:

- Conduct a Community Health Needs Assessment (CHNA) at least every three years.
- Adopt a Strategic Implementation Plan that includes how the needs identified in the assessment will be met.
- Report to the Internal Revenue Service via its 990 tax form how it is meeting its implementation plan.

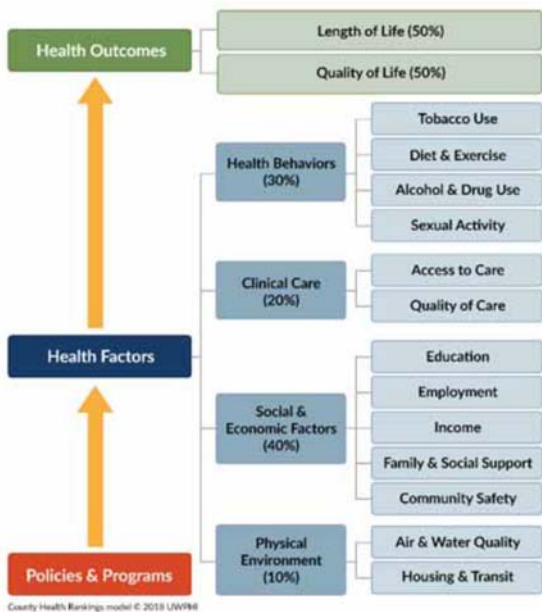
The Community Health Needs Assessment Report details the process used to collect, disseminate and prioritize the information in the assessment. The Medical Center at Caverna worked closely with local healthcare and public health leaders throughout the assessment process.

The end result of the assessment process was the development by the hospital of a strategic plan to address the major needs identified.

Process

In September 2011, The Medical Center at Caverna joined with the Barren River District Health Department and numerous other healthcare providers, community organizations and leaders to form the Barren River Community Health Planning Council (“Council”). The Council’s membership consists of non-profit organizations that seek to recognize and serve those most in need in order to benefit the whole community. The goal of the Council was to plan and implement a community health needs survey and assessment process followed by identification of key healthcare needs for the community and then development of strategic plans to meet those needs. Over the fall and winter of 2014-2015, partners voted to change the name of the council to the Barren River Initiative to Get Healthy Together or “BRIGHT Coalition”.

In spring 2018, the BRIGHT Coalition initiated Cycle 3 of the community assessment. Members of the coalition were restructured into four subcommittees based on the health focus areas inspired by social determinants of health and the County Health Rankings & Roadmaps. These areas include: health behaviors, clinical care, social and economic factors, and physical environment. Members joined the group they most closely identified with professionally.



Gaps and assets related to each of the four newly formed group’s area of focus were identified for each of the 10 counties. From there, each of the groups developed survey questions they felt would identify the community needs in their specific focus area. Coalition members were given a chance to review the entire survey as well as provide feedback for changes and improvements to the survey

questions before it was distributed. The survey was disseminated September 1 – November 30, 2018 to all 10 counties in the BRADD area.

The survey was available electronically on hospital and health department websites as well as on paper. The survey was placed in free standing health clinics, libraries, UK Extension office locations, distributed at health fairs, distributed to over 50,000 homes via the Med Center Health WellNews publication with paid postage for return, placed in the Bowling Green Daily News newspaper and provided to local housing authorities. The goal was to have as many different populations represented in the BRADD area respond to the survey as possible. The underserved populations were especially a focus as far as a desired group of survey respondents.

The surveys were analyzed by the Barren River Area Health Department. After reviewing the data collected, it was determined by the BRIGHT Coalition that there was not enough representation of the underserved population. Each of the four BRIGHT workgroups determined where the underserved population could potentially be reached and which specific topic(s) of the survey they wanted to narrow in on to collect more information. Questions were developed to survey the specific populations either individually or in a focus group setting. It was also determined that it would be beneficial to ask professionals that work with these populations of people to determine barriers they encounter when trying to meet the needs of the communities they serve.

Priorities Identified by BRIGHT

Each BRIGHT Coalition subcommittee identified data driven objectives for their area of focus as listed below.

Health Services

- Increase primary care access across BRADD

Health Equity

- Increase support for healthy child and family development
- Educate residents and community organizations on available human and social services
- Implement Health in All Policies approach across the BRADD

Health Environment

- Educate the public about the importance of the cleanliness of our water resources and air quality
- Decrease commute times throughout the region
- Increase development of mixed-use areas that: improve walkability, encourage biking, provide affordable housing, elevate access to fresh, healthy foods, reduce the number of fatalities and injuries, minimize automotive traffic, increase transit use, enhance air quality

Healthy Lifestyles

- Access to fresh and healthy food
- Alcohol use, substance abuse and mental health awareness
- Incorporating exercise and healthy habits

In addition to the work with BRIGHT, we felt it was important to include the work conducted by the Hart County Chamber of Commerce in how our priorities were determined. Based on feedback from its membership, the Chamber established the following item in its 2018 Program of Work Plan:

- Host a community conversation about addiction and substance abuse with the goal of identifying existing resources, determining ways to combat the stigma of addiction, and developing strategies to help ensure individuals have access to treatment needed to return to healthy productive lives.

The Chamber then hosted a workshop entitled “Opening the Door: Conversations About Addiction” in February 2018. Speakers at this workshop included representatives from law enforcement, State government, industry, and the keynote speaker, Alex Elswick, an Addiction Specialist from the University of Kentucky. This workshop was followed by a community forum to determine next steps for the Hart County community.

From this forum, the Hart County Addiction Task Force was formed, which later changed its name to Hart Addiction Resource Team (HART). The mission of HART is to “help individuals who are struggling with addiction to find and follow a path to recovery by promoting education and advocacy of community resources.”

Based on feedback from the BRIGHT Coalition survey results, as well as feedback from the Hart County Chamber of Commerce and the Hart Addiction Resource Team, The Medical Center at Caverna intends to address the following priority health issues in 2019-2021:

- Substance Abuse
- Chronic Disease

Substance Abuse

Substance abuse will be a main focus for this community health plan period based on growing data seen within our hospital system over the past five years as well as concern from outside sources.

An increase in overdoses has been seen in the Med Center Caverna emergency department. Another area of concern voiced by hospital medical and security staff is an increase in violence towards medical staff as well as increasing challenges to control pain in this population of patients. Based on these findings and growing concern with opioid abuse spreading in areas surrounding our

region, a substance abuse committee was established in 2018 within the hospital system which includes community partners as well. We realize this is a community wide issue and will take full community effort to affect change.

A regional substance abuse forum was held in November 2018 to educate community partners as well as establish a working task force to address prevention, treatment and recovery in the area of substance abuse. These efforts will be ongoing and are inclusive of all ten counties in the BRADD region. We will continue to make efforts to expand our community partnerships and build alliances in this area.

Chronic Disease

Chronic disease including access to care and prevention of obesity, diabetes, lung disease and heart disease have been ongoing focuses for the previous assessment periods. We know, if left uncontrolled, obesity and diabetes can have a significant negative impact on overall health and quality of life and are often the catalyst of other chronic health issues. For these reasons, we feel it is important to continue efforts in these areas.

Explanation of BRIGHT Coalition priorities that will not be addressed at this time by The Medical Center at Caverna:

Many excellent priorities were identified by the BRIGHT Coalition subcommittees. It is important to realize that many constituencies are represented by the BRIGHT Coalition including, but not limited to, education/school systems, governmental entities, public health, industry, faith-based organizations and social services.

The Medical Center at Caverna chose the two priorities mentioned above, at the exclusion of the other BRIGHT Coalition subcommittee priorities, because of the following reasons.

- Other organizations are better suited to addressing some of the BRIGHT Coalition priorities
- The Medical Center at Caverna has limited resources and feels the two selected priorities are the best areas for focus for us
- Some of the BRIGHT Coalition priorities we excluded from our own set of priorities require significant funding and changes in community infrastructure, which are beyond our control

The assessment results and strategic plan were submitted to the hospital board for review and approval and then made available to the community on the [Med Center Health](#) website. The BRIGHT Coalition's Executive Summary booklets outline the Community Health Plan for 2019-2021 and are available as a link on the Med Center Health website as well as in paper format throughout the community.

Community Demographics: Barren River Area Development District including Hart County

Key Indicators

| | | |
|-------------------------|--------------------|------------------|
| | Hart County | Kentucky |
| Total Population | 18,757 | 4,454,189 |

Data Source: Population Division, U.S. Census Bureau

Education Level

| County | High School Graduation | Some College |
|----------|------------------------|--------------|
| Allen | 88% | 49% |
| Barren | 84% | 50% |
| Butler | 93% | 42% |
| Edmonson | 93% | 47% |
| Hart | 98% | 41% |
| Logan | 89% | 49% |
| Metcalfe | 93% | 42% |
| Monroe | 98% | 48% |
| Simpson | 94% | 45% |
| Warren | 93% | 64% |
| Kentucky | 89% | 60% |

Reference: County Health Rankings and Roadmaps. November 2015. Retrieved from: <http://www.countyhealthrankings.org/rankings/data/ky>

Poverty Level and Median Household Income

| County | Children in Poverty, Percent | Persons in Poverty, Percent | Median Household Income in 2017 dollars 2013-2017 |
|----------|------------------------------|-----------------------------|---|
| Allen | 28% | 21.8% | \$40,598 |
| Barren | 30% | 22.1% | \$39,658 |
| Butler | 27% | 17.1% | \$39,362 |
| Edmonson | 31% | 16.9% | \$41,114 |
| Hart | 30% | 20.0% | \$37,315 |
| Logan | 26% | 17.9% | \$40,982 |
| Metcalfe | 37% | 23.4% | \$35,594 |

| | | | |
|----------|-----|-------|----------|
| Monroe | 35% | 24.3% | \$35,665 |
| Simpson | 25% | 14.4% | \$44,989 |
| Warren | 23% | 16.1% | \$49,508 |
| Kentucky | 24% | 17.2% | \$46,535 |

Reference: County Health Rankings and Roadmaps. February 2019. Retrieved from: <http://www.countyhealthrankings.org/rankings/data/ky>
Reference: U. S. Census Bureau. April 1, 2010, (V2018). Retrieved from: <https://www.census.gov/quickfacts/fact/table/>

Unemployment Rates

| County | Unemployed | Labor Force | % Unemployed |
|----------|------------|-------------|--------------|
| Allen | 300 | 9,095 | 3.3% |
| Barren | 748 | 19,051 | 3.9% |
| Butler | 215 | 5,326 | 4.0% |
| Edmonson | 223 | 4,935 | 4.5% |
| Hart | 323 | 8,202 | 3.9% |
| Logan | 396 | 12,544 | 3.2% |
| Metcalfe | 154 | 4,149 | 3.7% |
| Monroe | 224 | 4,943 | 4.5% |
| Simpson | 303 | 8,756 | 3.5% |
| Warren | 2,064 | 64,398 | 3.2% |

Reference: Kentucky Career Center. December 2018 Retrieved from: <https://kystats.ky.gov/Content/Reports/CurrentLAUS.xlsx>

Health Statistics & Rankings

| Health Behaviors | Kentucky | Warren | Allen | Barren | Butler | Edmonson | Hart | Logan | Metcalfe | Monroe | Simpson |
|---------------------------------|----------|--------|--------|--------|--------|----------|--------|--------|----------|--------|---------|
| Adult smoking | 24% | 19% | 22% | 23% | 23% | 21% | 24% | 22% | 26% | 24% | 23% |
| Adult obesity | 34% | 32% | 36% | 32% | 32% | 31% | 37% | 35% | 34% | 34% | 39% |
| Physical inactivity | 28% | 24% | 34% | 31% | 36% | 26% | 37% | 38% | 32% | 29% | 27% |
| Food Insecurity | 16% | 10% | 14% | 14% | 14% | 16% | 12% | 11% | 15% | 14% | 12% |
| Limited access to healthy foods | 6% | 6% | 0% | 4% | 4% | 1% | 4% | 7% | 1% | 1% | 6% |
| Quality of Life | | | | | | | | | | | |
| Diabetes prevalence | 13% | 10% | 14% | 14% | 14% | 16% | 12% | 11% | 15% | 14% | 12% |
| Clinical Care | | | | | | | | | | | |
| Mental health providers | 520:1 | 470:1 | 1720:1 | 760:1 | 1280:1 | 3030:1 | 1550:1 | 1770:1 | 1110:1 | 1180:1 | 1060:1 |

Source: Robert Wood Johnson, CountyHealthRankings.org, 2018 County Rankings

Data Pulled 2/5/19



Other Demographic Data from the U.S. Census Bureau

| | <u>Hart Co.</u> | <u>U.S.</u> |
|--|-----------------|-------------|
| <u>Housing</u> | | |
| Median value of owner-occupied housing units | \$90,200 | \$193,500 |
| Median gross rent | \$508 | \$982 |
| <u>Health</u> | | |
| % with a disability, under age 65 years | 16.7% | 8.7% |
| % without health insurance, under 65 years | 7.4% | 10.2% |
| <u>Economic</u> | | |
| In civilian labor force, % of population age 16 years+ | 52.8% | 63.0% |
| Median household income | \$37,315 | \$57,652 |
| Per capita income | \$19,715 | \$31,177 |

**THE MEDICAL CENTER at CAVERNA
IMPLEMENTATION STRATEGIES
FOR ADDRESSING COMMUNITY HEALTH NEEDS
2019 – 2021**

Through the research and recommendations from the Community Health Needs Assessment, hospital staff, administration and Board of Directors, the following strategies will guide The Medical Center at Caverna’s leadership in addressing our community’s health needs over the next three years.

Partnerships With Key Community Organizations

Key partners are listed below:

- American Red Cross
- Hart Addiction Resource Team
- National Stroke Association
- Kentucky Heart Disease and Stroke Prevention Task Force
- American Lung Association
- American Heart Association and Society of Cardiovascular Patient Care
- Barren River District Health Department
- Kentucky Cancer Program
- American Cancer Society
- South Central Kentucky AHEC

Implementation Strategies

Identified Priority: Substance Abuse

Goals:

- Reduce the incidence of drug related overdoses and deaths
- Increase community awareness of the options available to assist those struggling with substance abuse problems

Partners:

- Barren River District Health Department
- Hart County Addiction Resource Team

Plan:

The Medical Center at Caverna will:

1. Provide a member to serve on the Hart Addiction Resource Team.
2. Explore with our community partners how to fill identified gaps in treatment and recovery in our community.
3. Promote awareness of treatment options available to those struggling with chemical addiction.
4. Educate and provide tools to help providers safely prescribe opioids and monitor usage.

Identified Priority: Chronic Disease Prevention and Management

Goals:

- Enhance public knowledge of obesity risk and its adverse effects on health
- Promote lifestyle changes to reduce risk of obesity and other chronic diseases
- Educate the public on resources available to reduce obesity
- Educate the public on resources available to treat chronic diseases including diabetes, heart disease and lung disease

Partners:

- Barren River District Health Department
- UK Extension Office
- Medicaid Managed Care Program/Case Management
- Kentucky Heart Disease and Stroke Prevention Task Force
- Hart County Schools
- Caverna Schools
- American Heart Association
- American Lung Association
- UK Markey Cancer Center

Plan:

The Medical Center at Caverna will:

1. Promote educational offerings related to chronic disease prevention and management and provide space, as available, for these offerings.
2. Provide or support community health fairs with blood pressure screenings, glucose screenings and stroke risk assessments.
3. Provide educational materials related to chronic disease prevention and management at health fairs and other community events.
4. Encourage hospital employees to take advantage of healthy lifestyle initiatives as opportunities arise.



5. Increase our focus on chronic disease prevention and management in our two Rural Health Clinics.
6. Work with partners to promote the implementation of smoke free environments throughout the community.

Communication Plan

The Medical Center at Caverna will publish the Community Health Needs Assessment, including the survey results and strategic plan, on its web site and make hard copies available to the public upon request. The results will also be incorporated into the hospital's annual IRS tax form 990 submission.

Conclusion

The Medical Center at Caverna is committed to the Community Health Needs Assessment and believes that this process will continue to strengthen relationships with other healthcare providers and organizations in the community to improve the quality of life in the communities we serve.